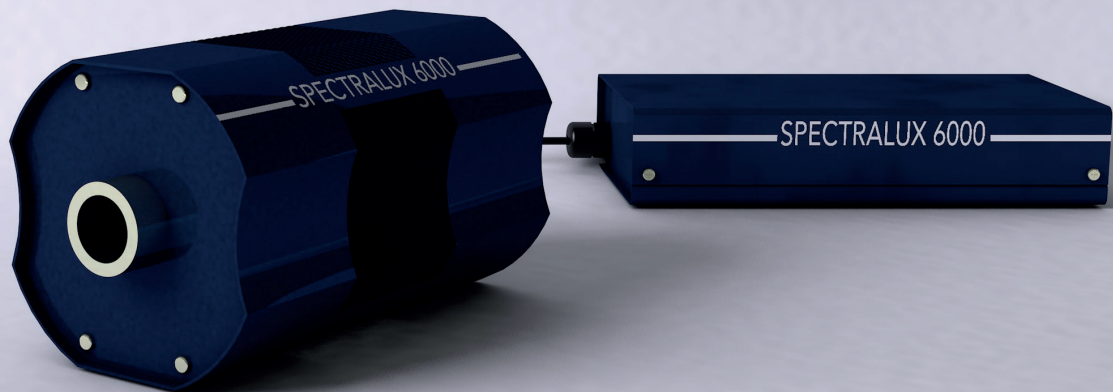


SPECTRALUX 6000 - 170 LED Lightsource

The Spectralux 6000 – 170 is a 123W CRI Ra98 LED Lightsource, delivering a maximum output comparable to a 210W metal Halide equivalent

We constantly update our components in line with improving technologies within the industry to ensure the utilisation at all times of the latest LED chipsets and drivers



Product Description

The Spectralux 6000 LED is the latest addition to the high-performance Fibre Optic Projectors designed and manufactured in the UK by Absolute Action.

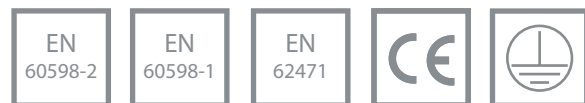
The lightsource is maintained at optimum operating conditions through the use of temperature-responsive control technology via a near-silent Maglev fan.

By maintaining the junction temperature of the LED at 47°C, improved lumens per watt and increased LED longevity and reliability are assured.

The new Spectralux 6000 features proprietary optional WiFi connectivity for live data streaming and communications, either as a WiFi Station or a WiFi Access Point with data storage internally and on the cloud. Equipment alerts and diagnostics are also included.

Light output is ideal for any substantial fibre optic lighting applications, making this a perfect retrofit unit for all industry-standard Glass and PMMA fibre systems, as well as any new-build requirements.

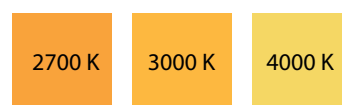
Standards



Control

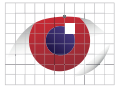


Colour Temperature



Finishes

NVY



General Information

Driver Unit	SELV
Driver Included	Yes (remote upto 100m)
Connection Type	IEC lead to driver, XLR lead from driver to Lightsource
Material	Steel
Applied Finish	Epoxy Powder Coating
Finished Colour	Navy (Custom finishes available*)
Infrared	No
UV	No

Operating & Electrical

Power	123.7W
Consumption	
Input Voltage	95VAC - 305VAC
Input Frequency	47Hz - 63Hz
Operating Temperature	-20°C to +55°C
Thermal Management	Dynamic Temperature Responsive Cooling + Thermal overload protection

Control & Dimming

Dimmable	Yes
Dimming Protocols	Manual 0-10V Dali WiFi
WiFi Enabled	Yes*
Colour Control	Yes*

Lighting & Optical Data

Lamp	High Density COB
Lamp Output	13,953 lm
Colour Rendering Index	Ra98 as standard Ra90 available*
Lamp Life	L90 54,351 hours (A/C M/F)
Correlated Colour Temperature (K)	2700K 3000K 4000K other CCTs available*
Optic Cover / Lens	Coupling AR Optics
UV Filter	N/A

Mechanical Data

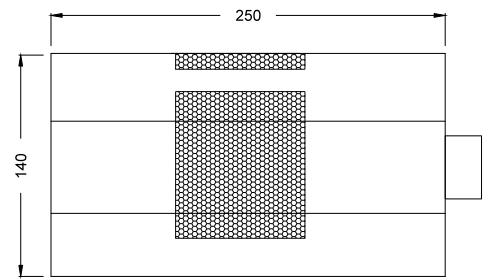
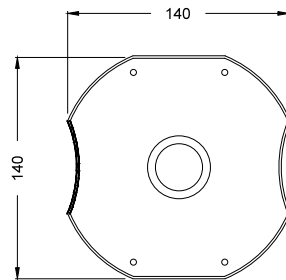
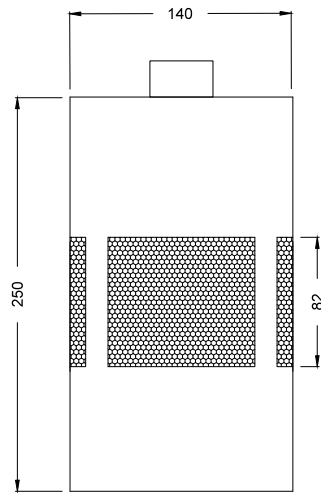
Lightsource (mm)	250 L x 141 W x 141 H
Weight	2.8Kg
Driver Unit (mm)	300 L x 150 W x 63 H
Weight	1.85 kg

Certification & Guarantee

Standards	CE BS EN 60598 BS EN 62471
IP Rating	IP35 to IP54
Warranty	3 Years return to base

* On request

Dimensional Data



Back Panel

