

SPECTRALUX 6000 LED Lightsource

The Spectralux 6000 is a 75W to 161W, CRI Ra95+ LED lightsource, delivering a maximum output comparable to a 230W Metal Halide equivalent Fibre Optic Projector and utilising the latest LED chipsets and driver technologies.

Product Description

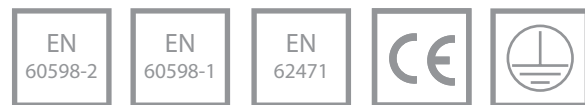
The Spectralux 6000 LED is the latest addition to the high-performance Fibre Optic Projectors designed and manufactured in the UK by Absolute Action.

The lightsource is maintained at optimum operating conditions through the use of temperature-responsive control technology via a near-silent Maglev fan. With a typical T_j of the LED at 47°C allows for improved lumens per watt and increased LED longevity and reliability.

The new Spectralux 6000 features proprietary optional WiFi connectivity for live data streaming and communications, either as a WiFi Station or a WiFi Access Point with data storage internally and on the cloud. Equipment alerts and diagnostics are also included.

Light output is ideal for any substantial fibre optic lighting applications, making this a perfect retrofit unit for all industry-standard Glass and PMMA fibre systems, as well as any new-build requirements.

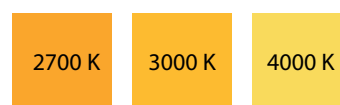
Standards



Control



Colour Temperature



Finishes



General Information

Driver Unit	SELV
Driver Included	Yes (remote upto 100m)
Connection Type	IEC lead to driver, XLR lead from driver to Lightsource
Material	Steel
Applied Finish	Epoxy Powder Coating
Finished Colour	Navy (Custom finishes available*)
Infrared	No
UV	No

Operating & Electrical

Power Consumption	74.9W to 161.1W
Input Voltage	95V - 305V
Input Frequency	47Hz - 63Hz
Operating Temperature	-20°C to +55°C
Thermal Management	Dynamic Temperature Responsive Cooling + Thermal overload protection

Control & Dimming

Dimmable	Yes
Dimming Protocols	Manual 0-10V Dali WiFi
WiFi Enabled	Yes*
Colour Control	Yes*

Lighting & Optical Data

Lamp	High Density COB
Lamp Output	9,637lm - 16,953 lm
Colour Rendering Index	Ra95 min as standard Ra97 Ra90 available*
Lamp Life	L90 54,351 hours (A/C M/F)
Correlated Colour Temperature (K)	2700K 3000K 4000K other CCTs available*
Optic Cover / Lens	Coupling AR Optics
UV Filter	N/A

Mechanical Data

Lightsource (mm)	250 L x 141 W x 141 H
Weight	2.8Kg
Driver Unit (mm)	300 L x 150 W x 63 H
Weight	1.85 kg

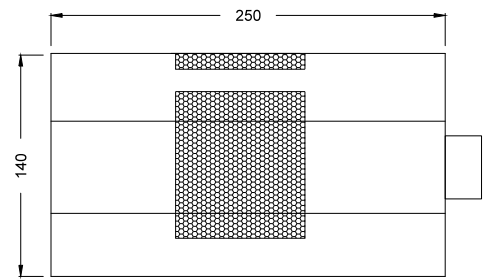
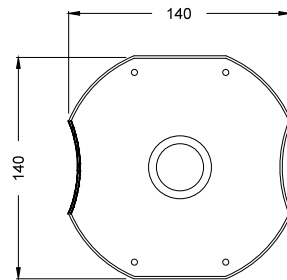
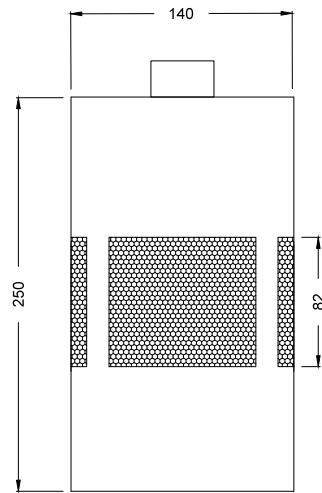
Certification & Guarantee

Standards	CE BS EN 60598 BS EN 62471
IP Rating	IP35 to IP54
Warrantee	N/A

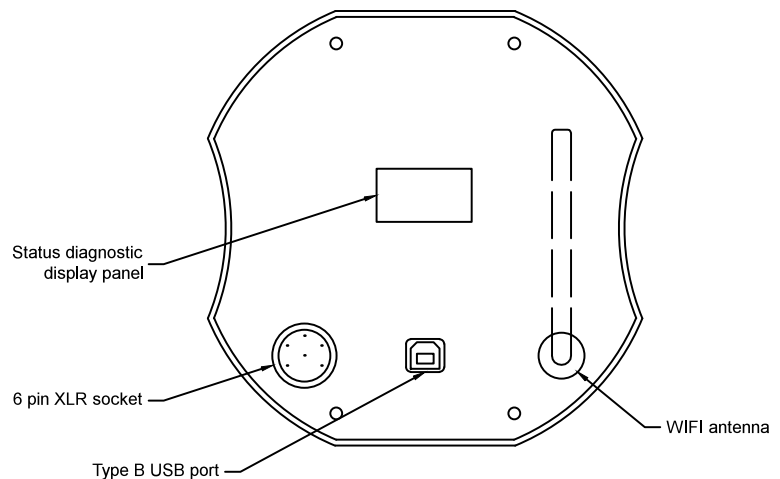
* On request

SPECTRALUX 6000 SPECIFICATION

Dimensional Data



Back Panel



ABSOLUTE ACTION

